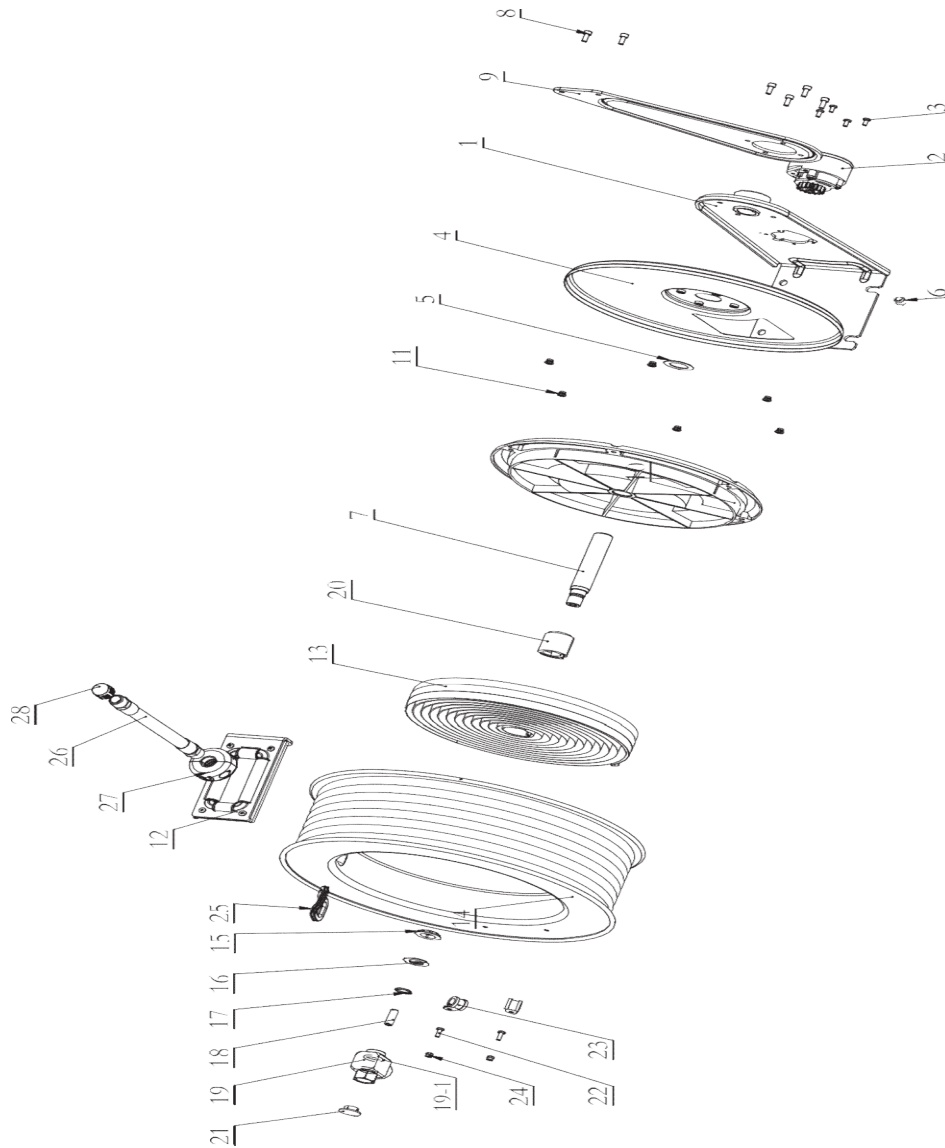


ENROLLADOR

Modelo. **YA 6844**



CALIDAD Y SERVICIO



| REP.NUMERO | DESCRIPCION | CANT. | REP.NUMERO | DESCRIPCION | CANT. |
|------------|--------------------------|-------|------------|--------------------|-------|
| 1 | Base conexión | 1 | 16 | Arandela | 1 |
| 2 | Conjunto de bloqueo | 1 | 17 | Anillo deretencion | 1 |
| 3 | Tornillos | 4 | 18 | Esparrago | 1 |
| 4 | Tapa | 1 | 19 | Valvula de entrada | 1 |
| 5 | Arandela | 2 | 19.1 | Retenes | 1 |
| 6 | Tornillo | 1 | 20 | Guia del muelle | 1 |
| 7 | Tubo conector | 1 | 21 | Tapon protector | 1 |
| 8 | Tornillo | 6 | 22 | Tornillos | 2 |
| 9 | Tapa lateral conexión | 1 | 23 | Abrazadera | 2 |
| 10 | Anillo | 1 | 24 | Tuercas | 2 |
| 11 | Tuercas | 6 | 25 | Guia | 1 |
| 12 | Guia de salida ccompleta | 1 | 26 | Manguera | 1 |
| 13 | Muelle principla | 1 | 27 | Topes manguera | 1 |
| 14 | Tambor guia | 1 | 28 | Tapon protector | 1 |
| 15 | Reten | 1 | | | |